



**DK COMMERCIAL**

*Boise, Idaho*

## OFFICE FOR LEASE



## PARK POINTE CENTER II 6151 N. DISCOVERY WAY

**LOCATION:** Chinden Blvd. & Discovery Way

**SPACE:** 30,631 Sq.Ft.

**SPACE AVAILABLE:** Suite A / 3314 Rentable Sq.Ft.  
Suite B / 1535 Rentable Sq.Ft.  
Suite A&B 4849 Rentable Sq.Ft.  
Suite C 1668 Rentable Sq.Ft.

**LEASE RATE:** \$15.00/sf Full Service Excluding Janitorial

**TERM:** 3 - 5 Years Preferred

**AVAILABLE:** Immediately

**AMENITIES:**

- Next door to the YMCA
- Newer Building
- Located in the Boise Research Center
- Raised Floor for Data Wiring (Ste. B)
- Great Access to Eagle, Meridian and Downtown Boise
- Potential Furniture Package

### FOR MORE INFORMATION CONTACT:

**DEBBIE MARTIN** 

**OR**

**SAM MARTIN**

**OFFICE PH: 208-955-1014**  
**CELL PH: 208-850-5009**  
**DEBBIE@DKCOMMERCIAL.COM**

**OFFICE PH: 208-955-1018**  
**CELL PH: 208-283-2953**  
**SAM@DKCOMMERCIAL.COM**

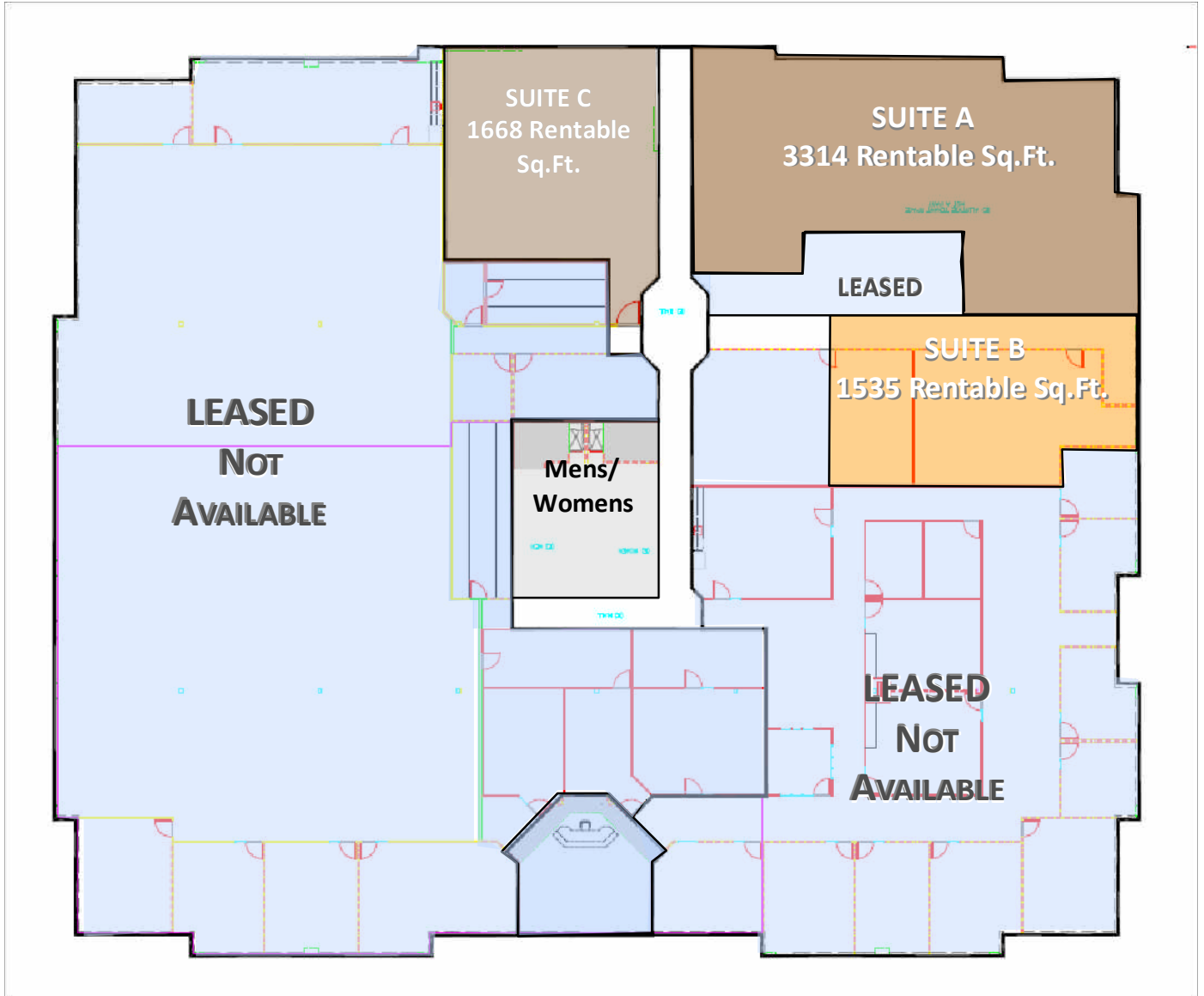
1880 SOUTH COBALT POINT WAY MERIDIAN, ID 83642 WWW.DKCOMMERCIAL.COM

The information contained herein has been obtained by reliable sources, but is not guaranteed. This offering is subject to errors, and omissions, prior sale, price change and withdrawal.



**DK COMMERCIAL**

*Boise, Idaho*



## **PARK POINTE CENTER II**

**6151 N. DISCOVERY WAY**

**FOR MORE INFORMATION CONTACT:**

**DEBBIE MARTIN** 

**OR**

**SAM MARTIN**

**OFFICE PH: 208-955-1014**

**CELL PH: 208-850-5009**

**DEBBIE@DKCOMMERCIAL.COM**

**OFFICE PH: 208-955-1018**

**CELL PH: 208-283-2953**

**SAM@DKCOMMERCIAL.COM**



**DK COMMERCIAL**

*Boise, Idaho*



**FOR MORE INFORMATION CONTACT:**

**DEBBIE MARTIN** 

**OR**

**SAM MARTIN**

**OFFICE PH: 208-955-1014**

**CELL PH: 208-850-5009**

**DEBBIE@DKCOMMERCIAL.COM**

**OFFICE PH: 208-955-1018**

**CELL PH: 208-283-2953**

**SAM@DKCOMMERCIAL.COM**