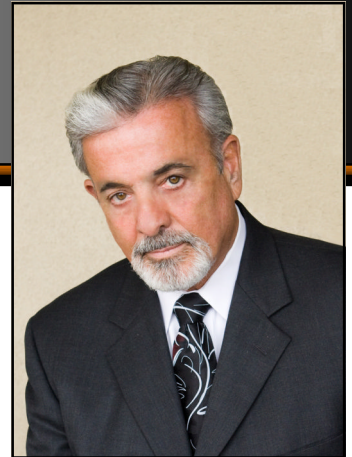


DK COMMERCIAL

Larkin Hall

Office : 208-955-1022
Cell: 208-861-8457
Fax: 208-955-1020
Larkin@dkcommercial.com



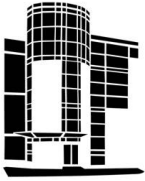
Larkin was raised in Idaho and has made the Treasure Valley his home for the past twenty years. A licensed Realtor in Idaho and California, Larkin has over thirty years of Real Estate experience in development as well as general brokerage in the Region. The Total Value of Larkin's transactions; which includes Land Sales, Leased Investments and Leases over a *Thirty Year Career*, exceeds \$500,000,000.

Larkin attended San Jose State University and Santa Clara and has degrees in economics and finance.

His Real Estate career began in Silicon Valley with Lincoln Property Company as a Market Analyst and Leasing Manager with the Commercial Division for Northern California. After leaving Lincoln he was affiliated with Connolly Development Company as the lead Broker and Leasing Director for Raleys/BelAir Supermarkets and their Retail Group and later Robacor Development Company as Leasing Manager for Mall Development in Northern California and the Sacramento Valley.

Larkin returned to Boise in 1988 and focused his attention on retail shopping center development and leasing and has represented local and regional development companies including: Robacor, Family Centers VFP, White-Leisure Development Company, and Grossman Properties. In addition, Larkin has represented, Safeway, BelAir Markets, Gap, Gap Kids, Old Navy, IHOP, Wendy's, Kinko's, Chili's, Victoria's Secret and many other national, regional, and local retailers.

In his off/leisure time Larkin enjoys spending time with family, bird hunting, and fly fishing in the West.



DK COMMERCIAL

Larkin Hall

Office : 208-955-1022

Cell: 208-861-8457

Fax: 208-955-1020

Larkin@dkcommercial.com

AFFILIATIONS:

ICSC (INTERNATIONAL CONFERENCE OF SHOPPING CENTER DEVELOPERS/BUILDERS)

IAR (IDAHO ASSOCIATION OF REALTORS)

VFW (VETERANS OF FOREIGN WARS/VIET NAM VETS)

M-M (MASTER MINDS)

CLIENTS/DEVELOPERS-BUILDERS

- ROBACOR
- VFP,VC/FAMILY CENTERS
- MARCON/CONNOLLY DEVELOPMENT
- GROSSMAN PROPERTIES
- THE RINKER COMPANY
- WHITE-LEASURE DEVELOPMENT
- AVEST
- FLEXXON OPERATING, LTD
- EQUITABLE REAL ESTATE
- PACIFIC RIM DEVELOPMENT
- TRAMMEL CROW

CLIENTS/RETAILERS

- SEARS
- FRED MEYER
- RALEY'S/BELAIR MARKETS
- WENDYS
- GAP/GAP KIDS
- OLD NAVY
- IHOP
- KINKO'S
- HOME DEPOT
- VICTORIA'S SECRET
- SAFEWAY