



DK COMMERCIAL

Caldwell, Idaho

LAND FOR SALE



11246 HWY 20-26

LOCATION: Off Hwy 20-26 btwn Ward St.
and Middleton Rd

ZONING: AG

SIZE: 7.47 ACRES

SALE PRICE: **\$750,000.00**

UTILITIES: TO SITE

AMENITIES:

- ◆ Commercial rezoning in comp plan
- ◆ Approx. 350ft of Hwy Frontage
- ◆ Currently in the City of Caldwell but surrounding parcels are already annexed into the County
- ◆ 3 Miles East of I-84

FOR MORE INFORMATION CONTACT:

BRENDA CLAY - CELL: 208-371-5804

OFFICE: 208-955-1015 * FAX: 208-888-1828 * EMAIL: BRENDACLAY@CABLEONE.NET

1880 SOUTH COBALT POINT WAY SUITE 200 MERIDIAN, ID 83642 WWW.DKCOMMERCIAL.COM

CREATED 06.19.08

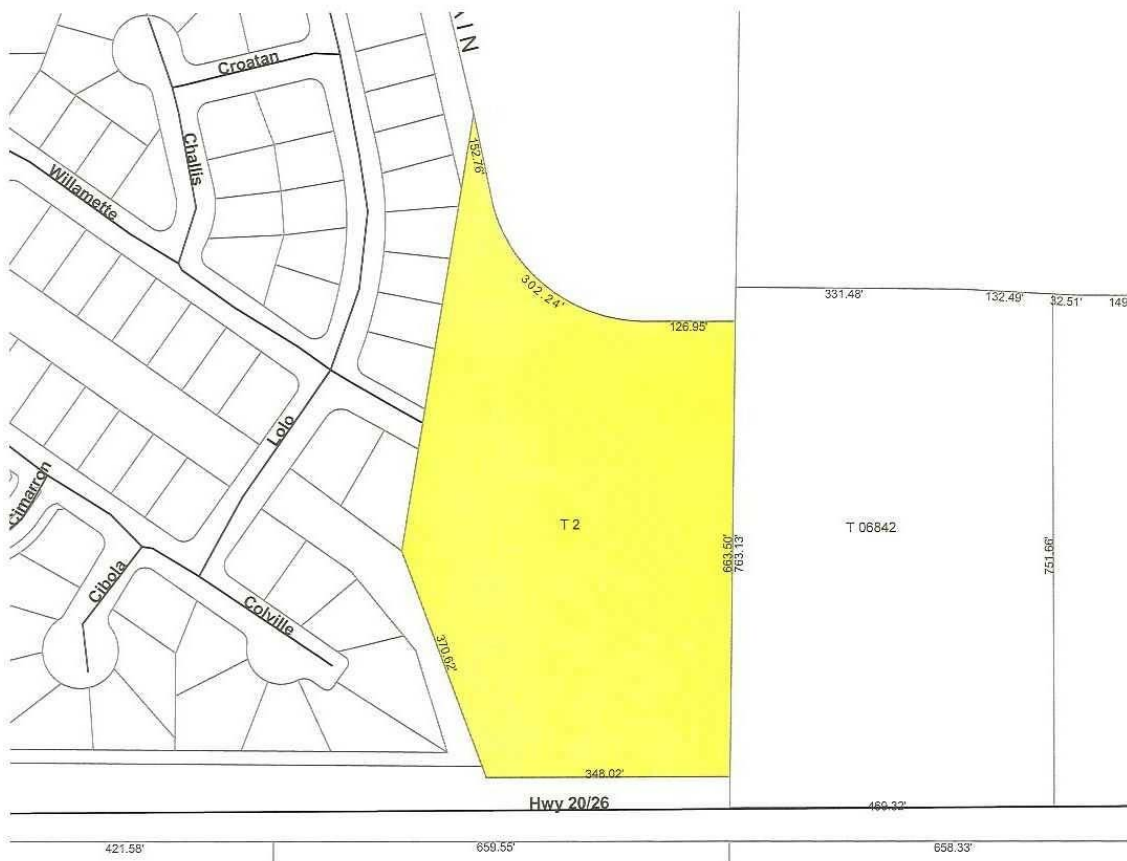
The information contained herein has been obtained by reliable sources, but is not guaranteed. This offering is subject to errors, and omissions, prior sale, price change and withdrawal.



DK COMMERCIAL

Caldwell, Idaho

11246 Hwy 20-26



FOR MORE INFORMATION CONTACT:

BRENDA CLAY - CELL: 208-371-5804

OFFICE: 208-955-1015 * FAX: 208-888-1828 * EMAIL: BRENDACLAY@CABLEONE.NET

1880 SOUTH COBALT POINT WAY SUITE 200 MERIDIAN, ID 83642 WWW.DKCOMMERCIAL.COM

CREATED 07.08.08

The information contained herein has been obtained by reliable sources, but is not guaranteed. This offering is subject to errors, and omissions, prior sale, price change and withdrawal.