



DK COMMERCIAL

Boise, Idaho

FLEX SPACE FOR LEASE



11770-11880 W. PRESIDENT DRIVE

Location: Between Cloverdale & 5-Mile

Building Size: 15,000 Sq. Ft.

Zoning: M-1 D

Term: 3-5 years

Lease Type: NNN

Estimated NNN Expenses: \$.17per Sq. Ft.

11880 President, Ste E :

1,875 Sq. Ft.

\$1,002.50/mo NNN

500 Sq. Ft. Office

1,375 Sq. Ft. Whs

11770 President, Ste F :

1,875 Sq. Ft.

\$1,016.54/mo NNN

608 Sq. Ft. Office

1,267 Sq. Ft. Whs

AMENITIES:

- ◆ Easy access to major arterials
- ◆ Great Boise Location
- ◆ 110/220/3 phase Power
- ◆ Full Sprinkler System
- ◆ 17ft Clear Height
- ◆ Ample Parking
- ◆ 10 x 12 Grade Level Doors in Rear
- ◆ **Possible Lease Incentives**

FOR MORE INFORMATION CONTACT:

BRENDA CLAY - CELL: 208-371-5804

OFFICE: 208-955-1015 * FAX: 208-888-1828 * EMAIL: BRENDACLAY@CABLEONE.NET

1880 SOUTH COBALT POINT WAY SUITE 200 MERIDIAN, ID 83642 WWW.DKCOMMERCIAL.COM

CREATED 04.17.09

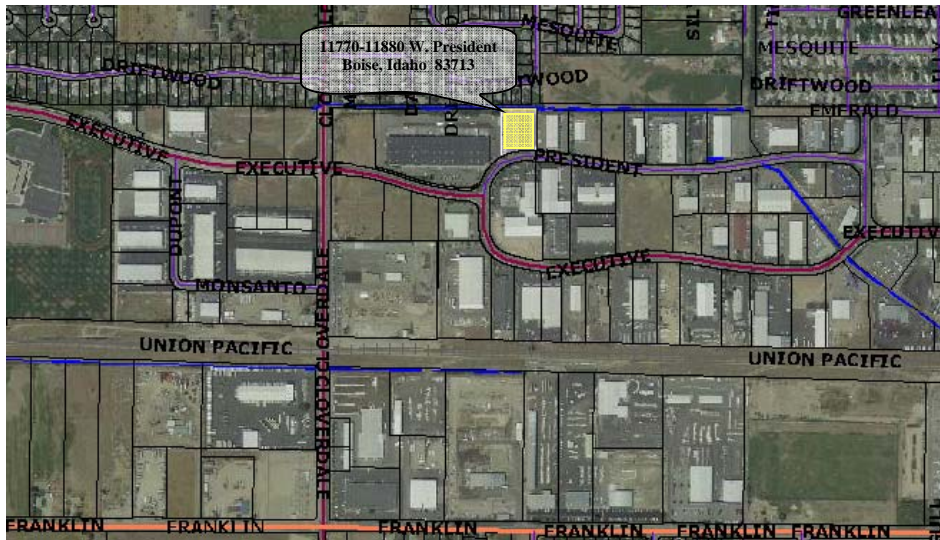
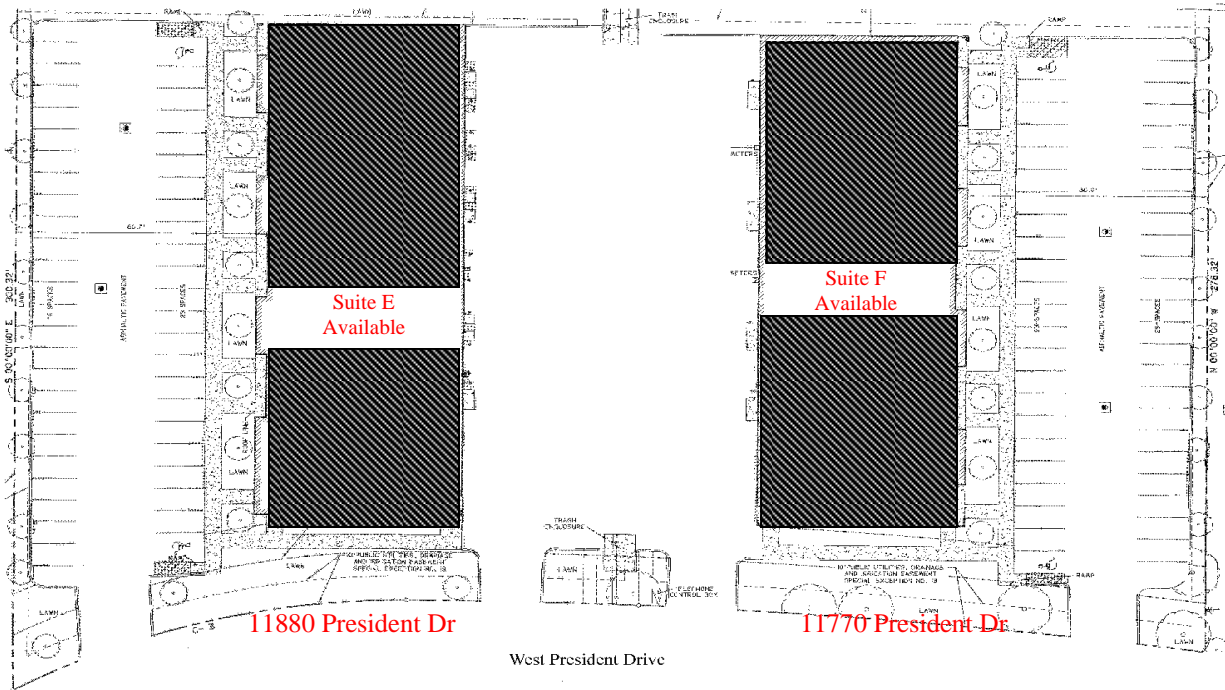
The information contained herein has been obtained by reliable sources, but is not guaranteed. This offering is subject to errors, and omissions, prior sale, price change and withdrawal.



DK COMMERCIAL

Boise, Idaho

11770-11880 W. President



**FOR MORE INFORMATION CONTACT:
 BRENDA CLAY - CELL: 208-371-5804
 OFFICE: 208-955-1015 * FAX: 208-888-1828 * EMAIL: BRENDACLAY@CABLEONE.NET**

1880 SOUTH COBALT POINT WAY SUITE 200 MERIDIAN, ID 83642 WWW.DKCOMMERCIAL.COM

CREATED 04.17.09

The information contained herein has been obtained by reliable sources, but is not guaranteed. This offering is subject to errors, and omissions, prior sale, price change and withdrawal.